



PATKAI CHRISTIAN COLLEGE (AUTONOMOUS)

Chümoukedima-Seithekema, B.P.O. Patkai- 797103, Dimapur, Nagaland

Affiliated to the Nagaland University

Recognised by UGC under 2F & 12B of the UGC Act 1956 in 1988

NAAC Re-accreditation: 'B++' Grade (4th Cycle)

A College with Potential for Excellence // A Post-Graduate College

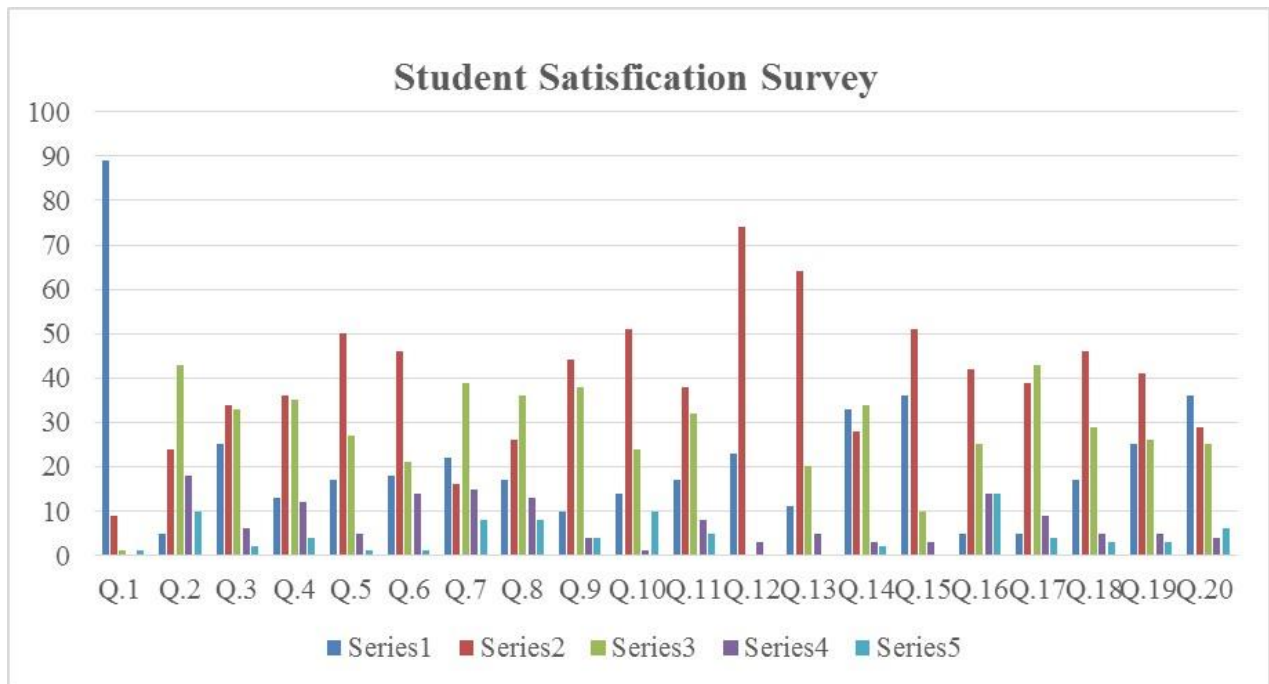
Ref No

Date

Total feedback: 100

Feedback Schedule Name: Student Satisfaction Survey (2023-2024)

Basic Courses: BA ENGLISH, BA EDUCATION, BA POLITICAL SCIENCE, BA PHILOSOPHY, BA HISTORY, BA ECONOMIS, B.COM, B. MUSIC, BCA, BSC. BOTANY, BSC CHEMISTRY, BSC GEOLOGY, BSC MATHEMATICS, BSC PHYSICS, BSC ZOOLOGY, MA ENGLISH, MA POLITICAL SCIENCE, MSC BOTANY, MSC PHYSICS, MSC ZOOLOGY





PATKAI CHRISTIAN COLLEGE (AUTONOMOUS)

Chümoukedima-Seithekema, B.P.O. Patkai- 797103, Dimapur, Nagaland

Affiliated to the Nagaland University

Recognised by UGC under 2F & 12B of the UGC Act 1956 in 1988

NAAC Re-accreditation: 'B++' Grade (4th Cycle)

A College with Potential for Excellence // A Post-Graduate College

| Sl. No | Question | Response Option | | | | |
|--------|---|-----------------|----|----|----|----|
| | | A | B | C | D | E |
| 1. | How much of the syllabus was covered in the class? | 89 | 9 | 1 | 0 | 1 |
| 2. | The College takes active interest and proactive steps in promoting student opportunities like Internship, Pre-placement and Placement Activities, etc., | 5 | 24 | 43 | 18 | 10 |
| 3. | The College/Department conducts skill enhancement learning activities in the form of Guest Lectures, Interaction with Industry Experts, Hands on Training and small research projects | 25 | 34 | 33 | 6 | 2 |
| 4. | The teaching and mentoring process in the College facilitates you in cognitive, social and emotional growth. | 13 | 36 | 35 | 12 | 4 |
| 5. | The institution provides multiple opportunities to learn and grow | 17 | 50 | 27 | 5 | 1 |
| 6. | Your teacher/mentor does a necessary follow-up with an assigned task to you. | 18 | 46 | 21 | 14 | 1 |
| 7. | The teachers identify your strengths and encourage you with providing right level of challenges | 22 | 16 | 39 | 15 | 8 |
| 8. | Teachers identify your weaknesses and help you to overcome them. | 17 | 26 | 36 | 13 | 8 |
| 9. | The College makes effort to engage students in the monitoring, review and continuous quality improvement of the teaching learning process which help in overall development. | 10 | 44 | 38 | 4 | 4 |
| 10. | Teachers encourage you to participate in co-curricular and extracurricular activities | 14 | 51 | 24 | 1 | 10 |



PATKAI CHRISTIAN COLLEGE (AUTONOMOUS)

Chümoukedima-Seithekema, B.P.O. Patkai- 797103, Dimapur, Nagaland

Affiliated to the Nagaland University

Recognised by UGC under 2F & 12B of the UGC Act 1956 in 1988

NAAC Re-accreditation: 'B++' Grade (4th Cycle)

A College with Potential for Excellence // A Post-Graduate College

| Sl. No | Question | Response Option | | | | |
|--------|---|-----------------|----|----|----|----|
| | | A | B | C | D | E |
| 11. | Efforts are made by the College/ Department/ teachers to inculcate soft skills, life skills and employability skills to make you ready for the world of work. | 17 | 38 | 32 | 8 | 5 |
| 12. | How well did the teachers prepare for the classes? | 23 | 74 | 0 | 3 | 0 |
| 13. | The overall quality of teaching-learning process in your college is very good. | 11 | 64 | 20 | 5 | 0 |
| 14. | How well were the teachers able to communicate? | 33 | 28 | 34 | 3 | 2 |
| 15. | The teachers illustrate the concepts through examples and applications | 36 | 51 | 10 | 3 | 0 |
| 16. | What percentage of teachers use ICT tools/Online teaching platforms and E-Resources while teaching-learning. | 5 | 42 | 25 | 14 | 14 |
| 17. | The teachers use student centric methods, such as case studies, relevant literature, experiential learning, peer learning, participative learning, examples, applications, problem-solving methodologies etc. for enhancing learning experiences. | 5 | 39 | 43 | 9 | 4 |
| 18. | The teacher's approach to teaching-learning can best be described as | 17 | 46 | 29 | 5 | 3 |
| 19. | Teachers inform you about your expected competencies, course outcomes and programme. | 25 | 41 | 26 | 5 | 3 |
| 20. | Was your performance in the internal exams discussed with you? | 36 | 29 | 25 | 4 | 6 |

Certified by:

Dr. Thepfulie Pieru
Principal,

Principal
Patkai Christian College
Chümoukedima : Seithekema

